



**REBOTNIX**  
**INDUSTRIAL SOLUTIONS**

The logo features the word "REBOTNIX" in a large, white, sans-serif font. The letter "O" is replaced by a grey gear icon with a blue grid pattern in its center. Below "REBOTNIX" is the phrase "INDUSTRIAL SOLUTIONS" in a smaller, white, sans-serif font. The entire logo is centered within a circular, futuristic interface. This interface includes a yellow progress bar at the top, a central yellow rectangular box containing the text "0.215", and various other data points and labels such as "0.250", "A 0.1", and "B". The background is dark blue with glowing lines and particles, suggesting a high-tech or industrial environment.



# GUSTAV SMART CITY SOLUTION

Version 1.0.3

# GUSTAV SMART CITY SOLUTION

Version 1.0.3

## Features

- NVIDIA® JETSON™ XAVIER NX GPU
- High AI computing performance for GPU-accelerated processing
- Ideal for intelligent edge applications
- Supports internal storage
- Ultra-compact enclosure design to install in trucks or fixed position





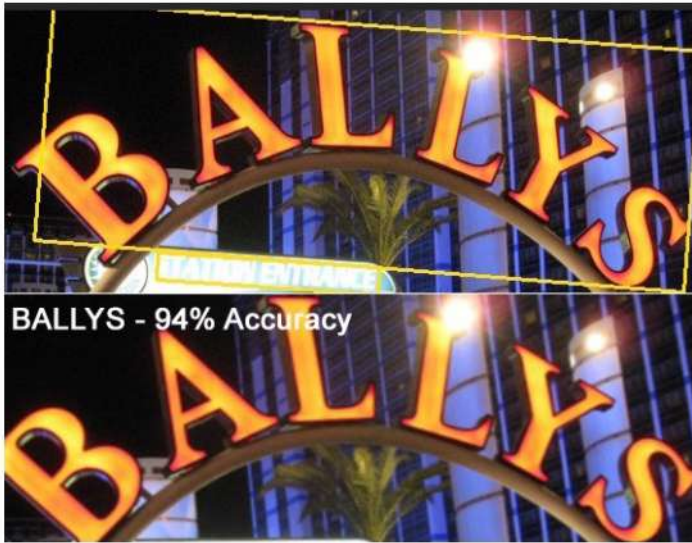
### POTHOLE



Our pothole model detects potholes, stores the position of the damage and the exact GPS position as

metadata separately or directly in the image file. Up to several hundred thousand images can be collected on the device and uploaded via a secure wifi line at the end of the day.

### OCR TEXT DETECTION & RECOGNITION



### WILD LANDFILLS



Wild landfills are a fundamental problem for waste disposal companies worldwide. Our garbage bag detection system can determine the exact position of the exposed garbage bags via GPS.

Our model for this type of recognition currently includes about 20,000 images for this type of category.

### REBOTNIX OCR SMART CITY MODEL



### TRAFFIC SIGN DETECTION



Example detection from our traffic model.

# GUSTAV SMART CITY DATASHEET

Version 1.0.3

| PRODUCT              | GUSTAV NX SMART CITY   |
|----------------------|--|
| AI Performance       | 21 TOPS  |
| GPU                  | NVIDIA Volta™ -Architektur<br>mit 384 NVIDIA® CUDA® -Cores and 48 Tensor-Cores |
| CPU                  | NVIDIA Carmel ARM® v8.2 64-Bit-CPU, 6 Cores<br>6 MB L2 + 4 MB L3               |
| Memory               | 4x LPDDR 8 GB / 128 Bit 59,7 Gbit/s  |
| Storage              | microSD & M2. Internal   |
| Video encoding       | 3x 4K @ 30 (HEVC)  |
| Video decoding       | 4x 4K @ 30 (HEVC)  |
| Internal connections | microSD<br>Integrated WLAN   |

# GUSTAV SMART CITY DATASHEET

Version 1.0.3

| PRODUCT              | GUSTAV TX2 SMART CITY   |
|----------------------|---|
| External connections | 1x Gigabit Ethernet, 1x Service(Lemo)<br>3x USB 3.0,<br>2x RP-SMA |
| Display              | -   |
| Cooling system       | Active  |
| Power supply         | 12V - 24V (Lemo)  |
| Dimensions           | 171 x 39 x 100 mm (W x H x D)                                     |
| LifeTime             | January 2028  |



<https://rebotnix.com>