

rebotnix Technologies

<https://rebotnix.com>

# REBOTNIX



---

**TECHNOLOGIES FOR MOTION PICTURE**

## **RB-Connect Manual**

**iOS Ethernet Adapter**  
(english)

Written by G. Hilgemann

Version: 1.09 - 2017

## Description

RB-Connect for iOS is a Low Power Device for Lightning to Ethernet. The device supports a self-booting Firmware with automatic or manual DHCP IP Interface. The adapter allows to run in flight mode as well in combination with Cellular. Wifi and Lan connection is not working at the same time. No installed App is required to run this Adapter. Internal Applications like Apple Facetime may not work.

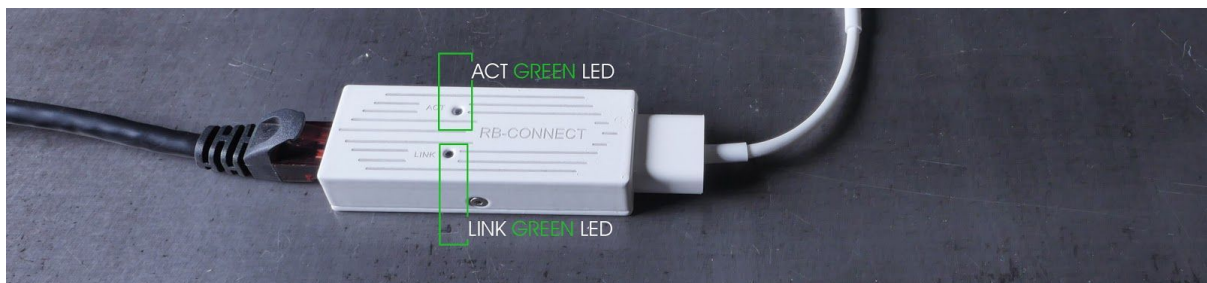
## Technical Datasheet

- IEEE 802.3 Standard
- rebotnix Low Energy Ethernet IEEE 802.3az Technology
- Stand Alone Lightning to Ethernet Adapter
- Apple MFI Standards
- 100 - 1000 Mbit (Depends on Device and battery)
- 1 x RJ-45 Ethernet Connector
- 1 x USB Male
- Dimensions: 6.8cm (length) \* 1.5cm (height) \* 2.9cm (width)
- Supported Devices
  - iPhone 5,5s,6,6 Plus, 6s, 6s Plus, 7
  - iPad, iPad Retina, mini 2 3 4, AIR & AIR 2, iPad Pro

## NOTICE!

PLEASE ONLY USE REBOTNIX LIGHTNING CABLE. ALL OTHER CABLES WILL NOT WORK WITH THIS ADAPTER AND WILL DAMAGE YOUR BATTERY OR DEVICE!

## Status LED's



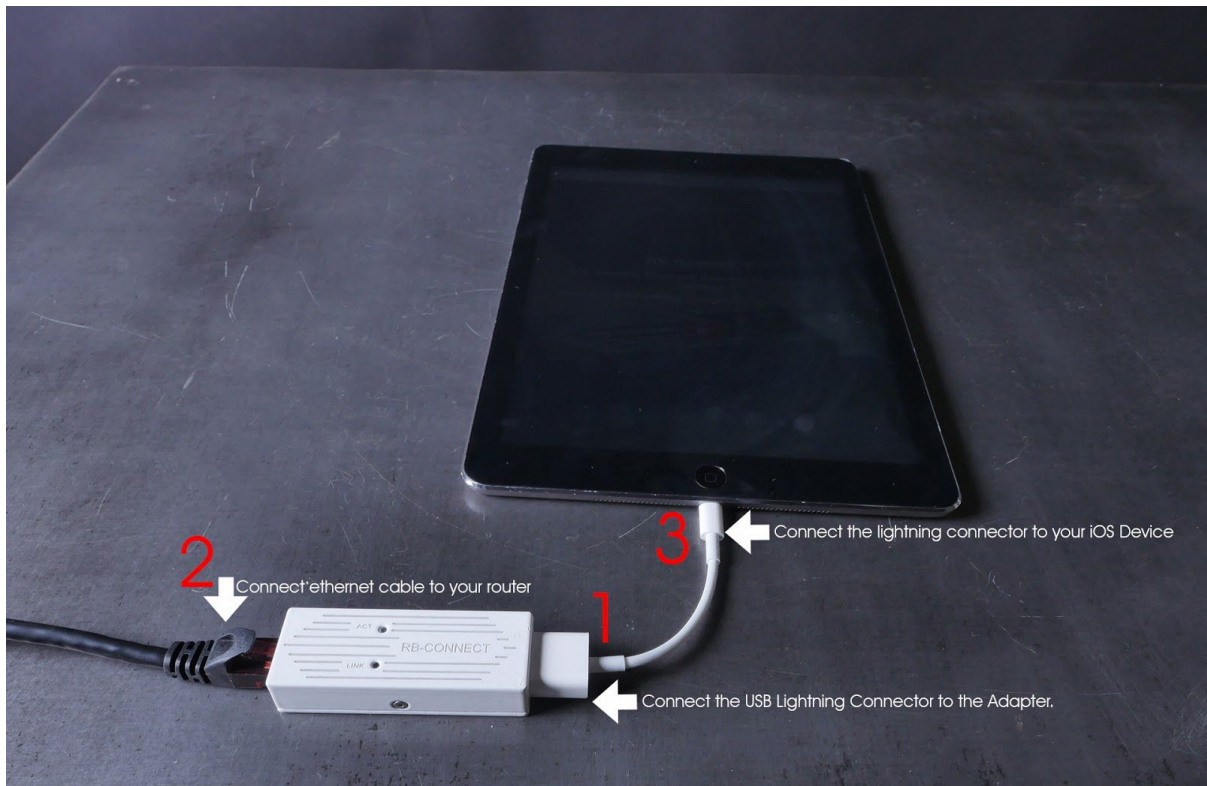
The RB-Connect has two LED's.

The Green ACT Green LED shows network activity.

The Green LINK LED shows if the network handshakes are correct and stable

## Hardware Installation

- 1) Connect the USB Cable to the Adapter (see red mark 1)
- 2) Connect your ethernet cable to your router (see red mark 2)
- 3) Connect the iOS Connector to your iOS Device (see red mark 3)



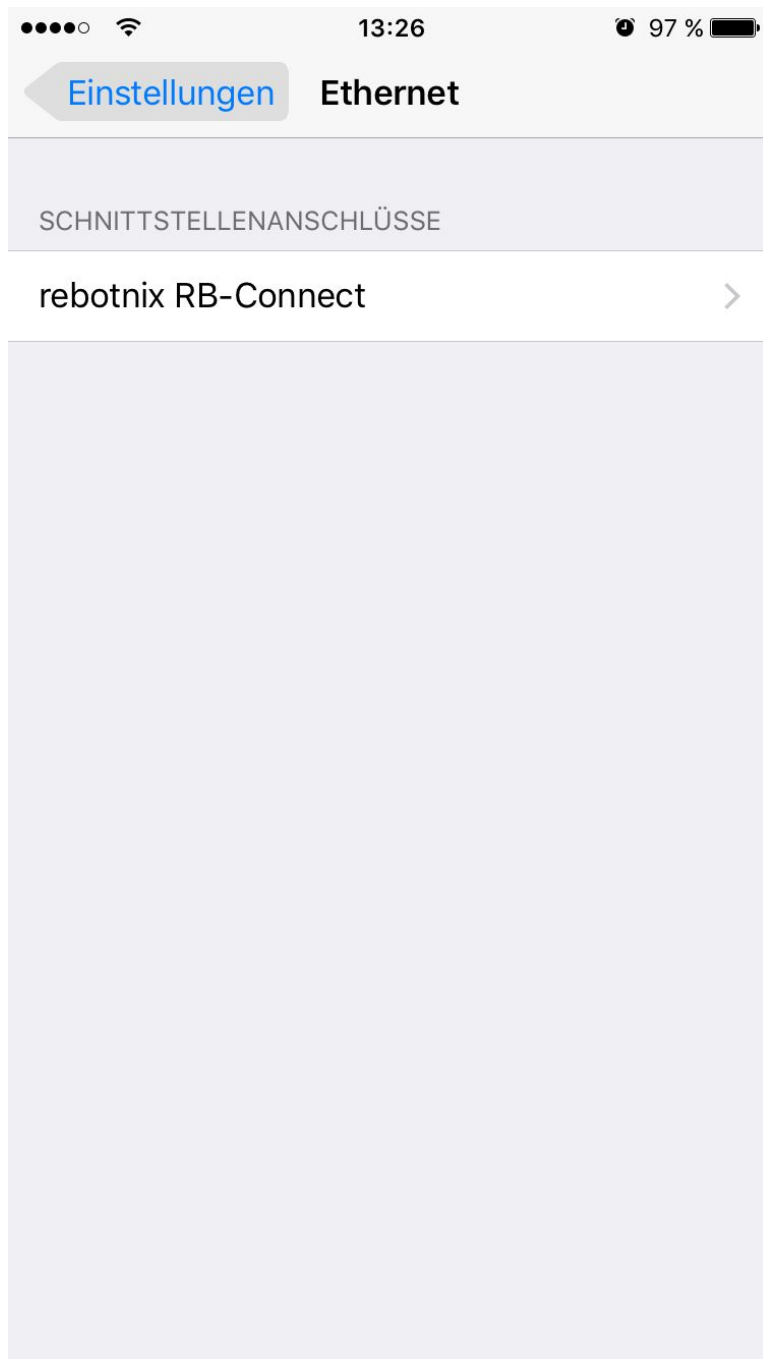
### RB-Connect User Interface (Software)

The adapter does not require any special app or installation. When you plugin the device, the drivers loaded automatically into the iOS Operation System. The Interface of the Adapter is shown under "Settings->Ethernet"

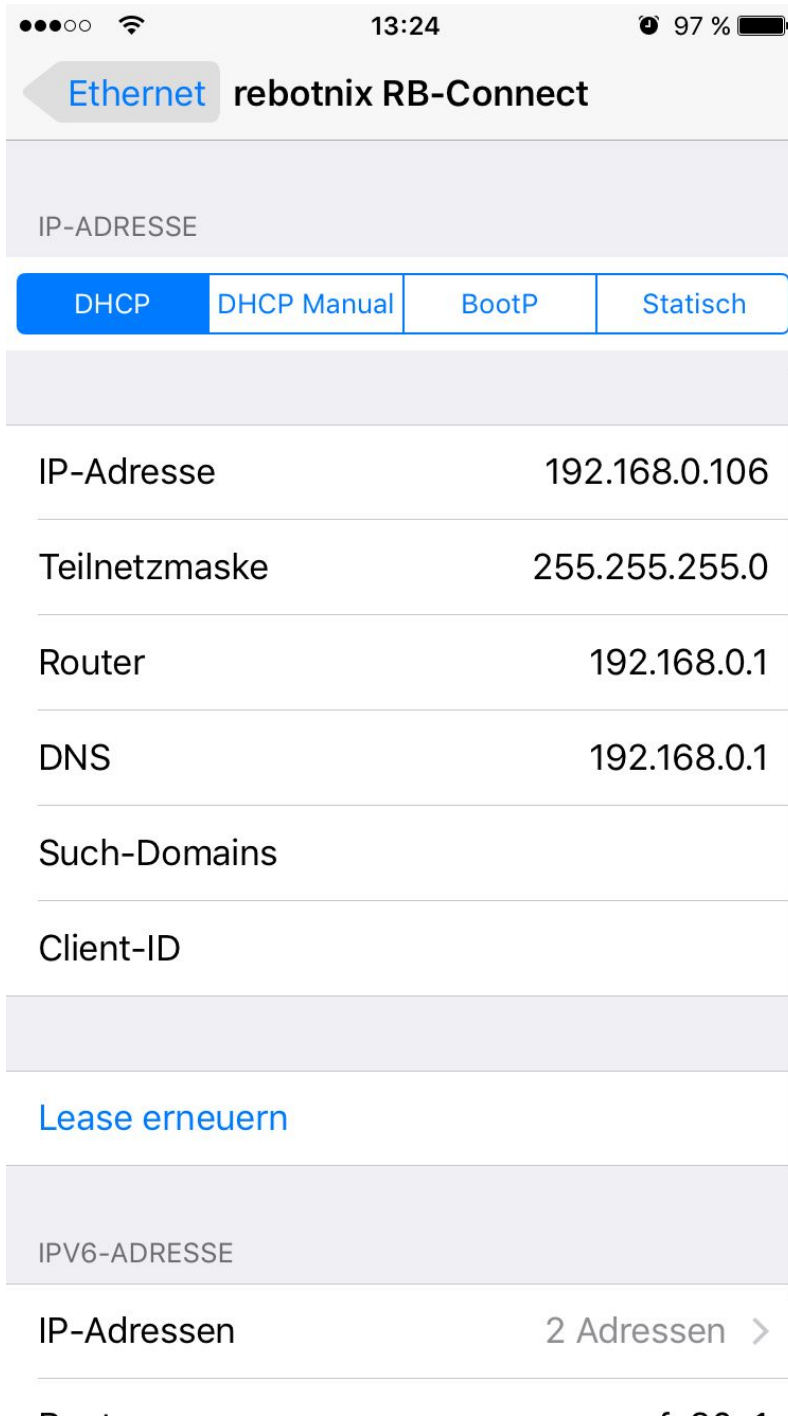
Take a look at this picture:



When you select the ethernet settings, you see the rebotnix RB-Connect entry. You can now select this entry to open the software dialog.



In the RB-Connect Interface, you can set your Network settings for DHCP or Static IP Configuration. Please consult your administrator for your personal settings for your LAN connection.



For any support questions, please visit our website.

<https://rebotnix.com>